

WELLINGTON
ARCHITECTURAL





CONTENTS

ABOUT US

PRODUCT RANGE

ENVIRONMENTAL
ADVANTAGES

TIMBER PANELS

PERFORATED PANELS

TIMBER GLAZED PARTITIONS

PROJECTS



Wellington Architectural specialises in the
manufacture of prefabricated, design-flexible
timber cladding panels

ABOUT US

We are a Canberra based company servicing all of Australia with prefabricated, design-flexible timber cladding panels. We have a range of designs to suit most projects, or we will work with you to ensure your design can come to life.

With a strong environmental and community focus, Wellington Architectural seeks to ensure that sustainability considerations are integrated throughout our practice.

As well as having a number of environmental advantages to other products, our timber panels are available in a wide range of styles, textures and finish options. All of our panels are manufactured with concealed fixings which enable architects, designers and contractors to create beautiful timber surfaces efficiently while minimising waste and installation time.

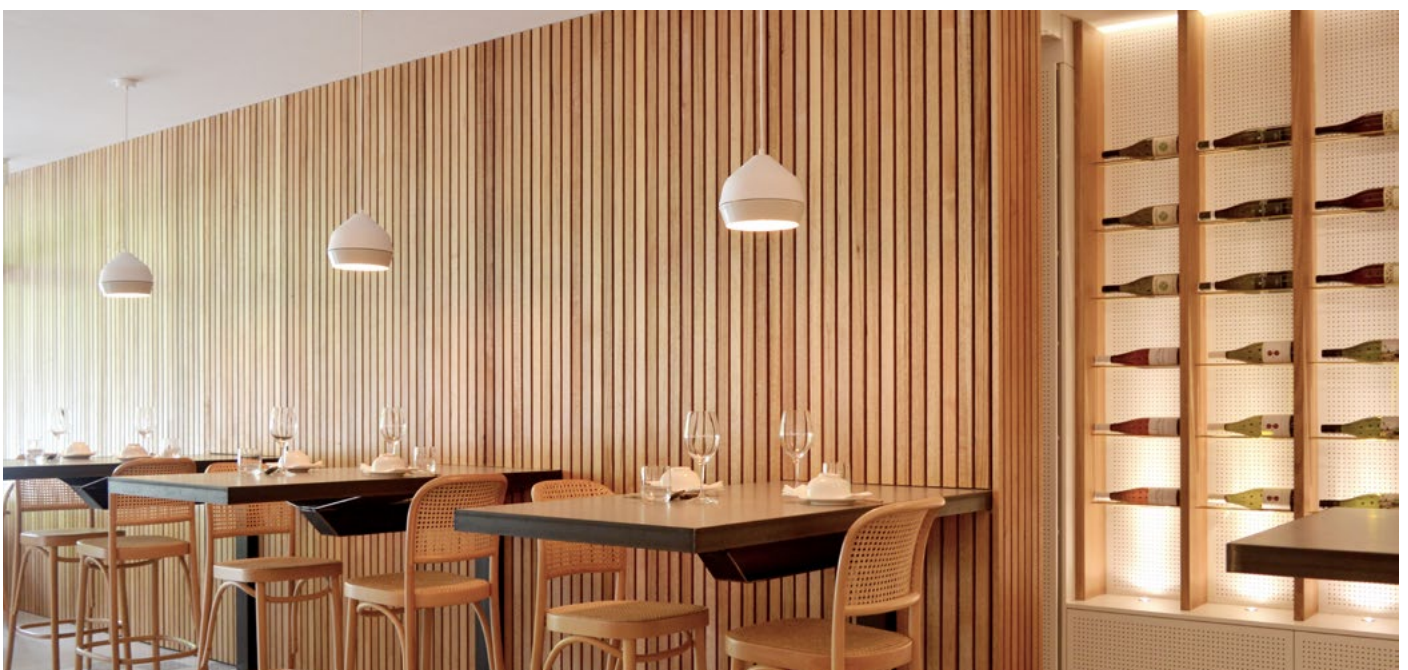
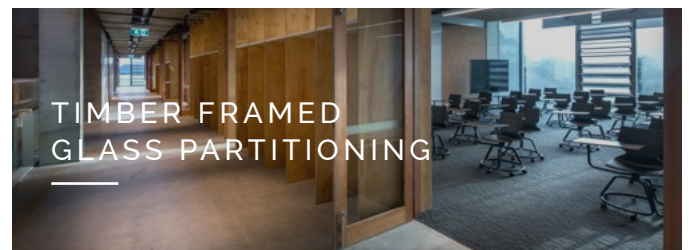
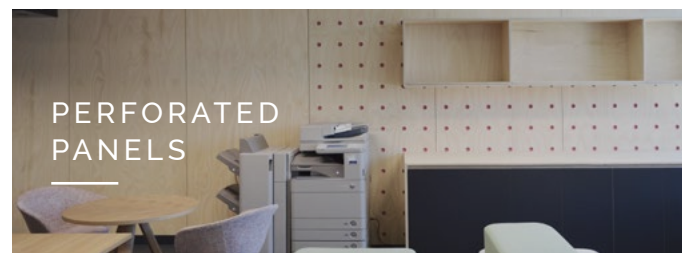
We work with Wainwright Facades to supply and install our product on your project. Alternatively we offer supply only panels which you can arrange to be installed by your preferred installer.

The design options for our panels are only limited by your imagination. We love new and interesting designs and would love to bring your next project to life.

PRODUCT RANGE

Wellington Architectural offers a wide range of products to suit every project. We specialise in our own range of flexible timber panels, customised to your design.

Our team will work with you and provide you with the best advice to ensure your project runs smoothly.

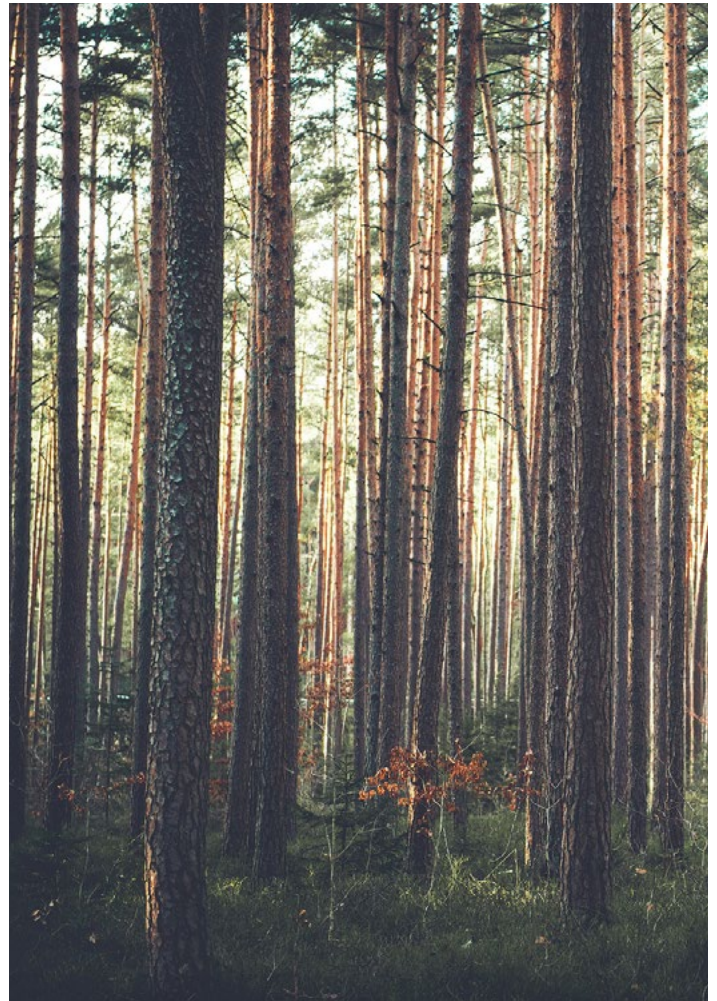


ENVIRONMENTAL ADVANTAGES

Environmental considerations are a foundation of the design and production process at Wellington Architectural. We seek to ensure that sustainability concerns are integrated throughout our practice.

We ensure all our timber purchased is sourced from sustainably managed forests, supporting sustainable forest management in Australia and around the world.

All of our panels are designed and made in Australia. This means our panels are delivered from our workshop directly to site, minimising carbon emissions and benefiting the Australian economy.



WHY USE TIMBER?



100%
Renewable Resource

Biodegradable

Thermal and sound
insulation properties

Uses less energy to
produce than any other
construction material

Helps to remove CO₂ from the
atmosphere through sustainable growth

TIMBER PANEL RANGE

Wellington Architectural specialises in the manufacture of 'design-flexible' pre-fabricated timber cladding panels. Our panels feature concealed fixings which provide a seamless finish with fast installation and reduced waste.

Our timber panel range contains a range of panel designs which are customisable and available in a range of timbers and finish options, customised to suit your project.

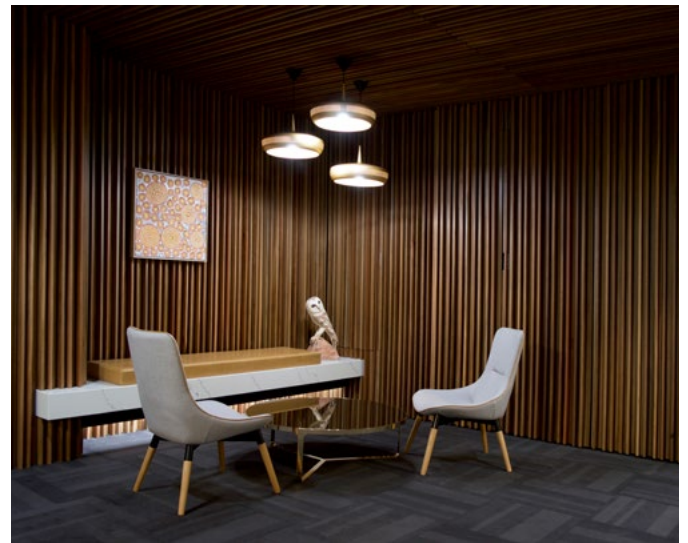
Below we provide details on the following panels:

- Epsilon Panel
- Alpha Panel
- Omega Panel
- Gamma Panel
- Delta Panel

While these are our most popular panel designs, any design can be modified to suit the specific project.

The pricing for our timber panel range varies based on the complexity of the design and amount of timber required to produce each panel.

Alpha Panel ↑ \$
Epsilon Panel
Omega Panel
Gamma Panel
Delta Panel ↓ \$\$\$



DESIGN GUIDE

Wellington Architectural design guide is aimed to assist architects, builders and contractors to easily and cost-effectively tailor our timber panel range to suit your project.

TIMBER SELECTION

When selecting timber cladding panels an important consideration is the price of various timbers. Refer to the Timber Species Guide for timber species specifications and other available species.



PANEL SELECTION

The pricing for our timber panel range varies based on the complexity of the design and amount of timber required to produce each panel. Custom panel designs are also available.



FINISH SELECTION

Choosing the right finish involves selecting the desired look and determining the conditions the timber will be exposed to.

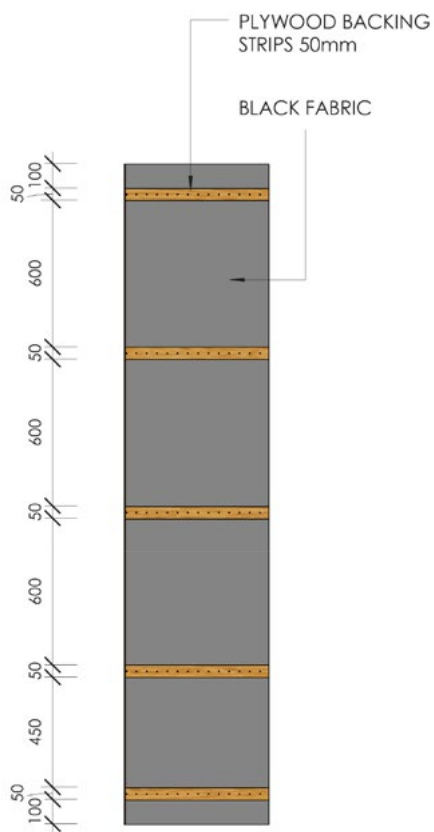
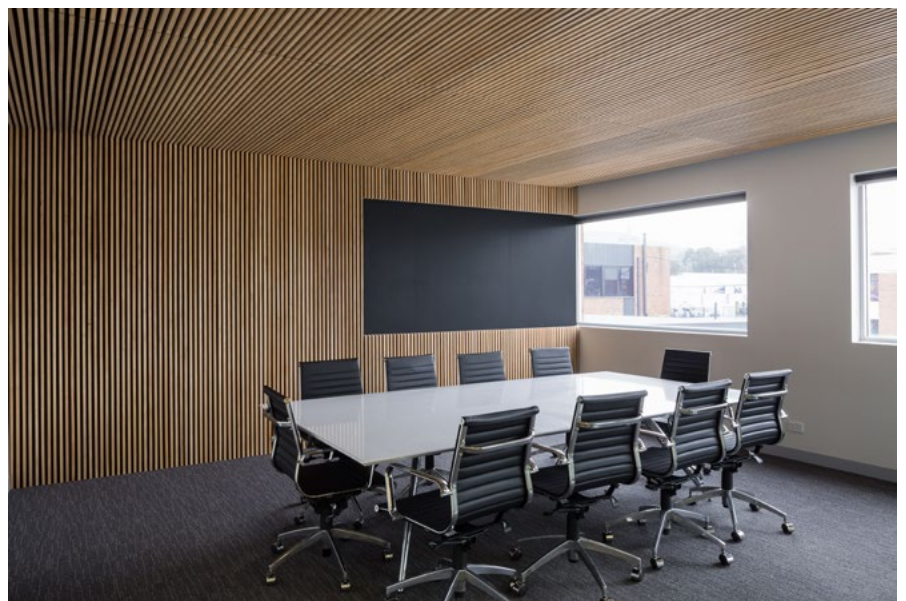
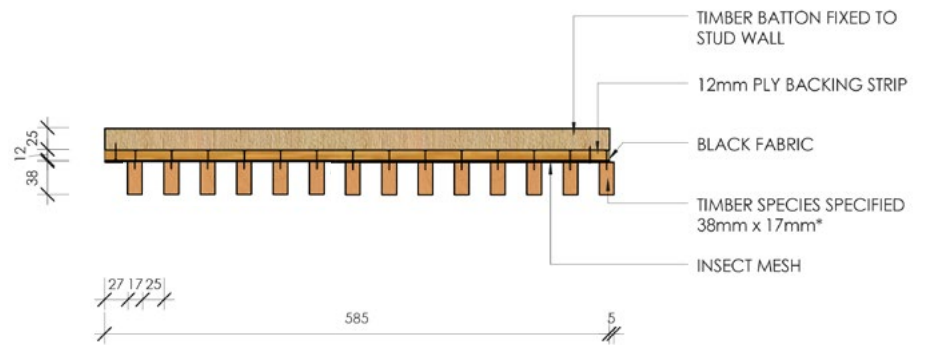
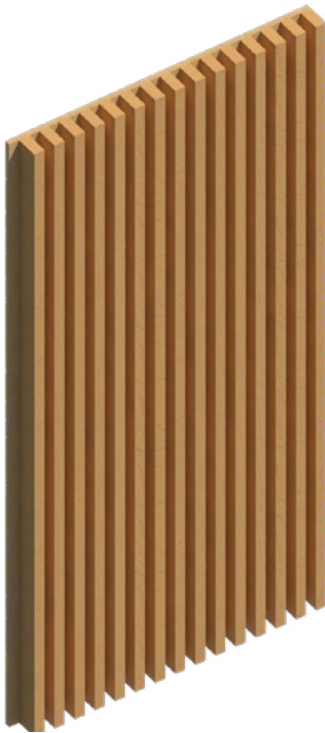


PANEL SIZE

Timber comes in all different sizes, however prices will generally rise as the panel length increases.

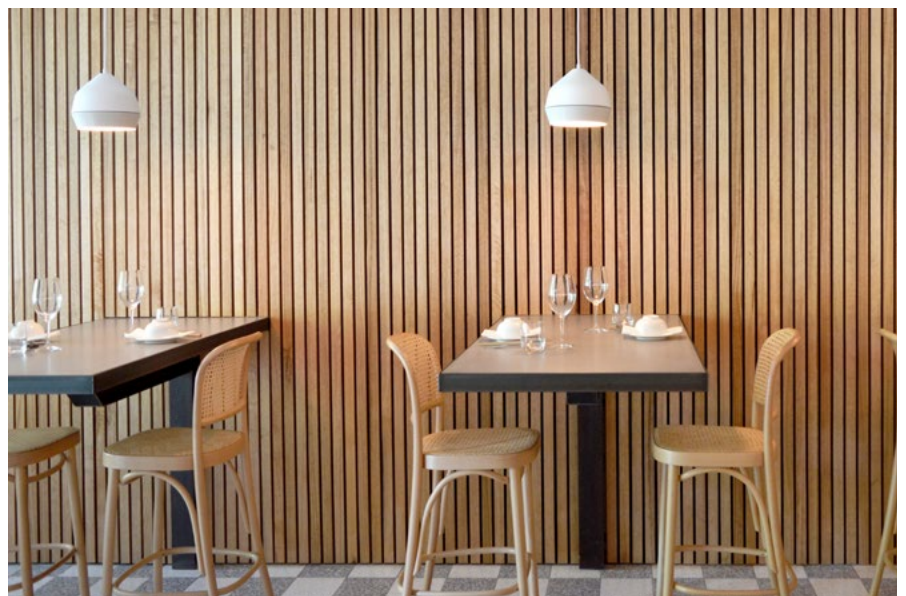
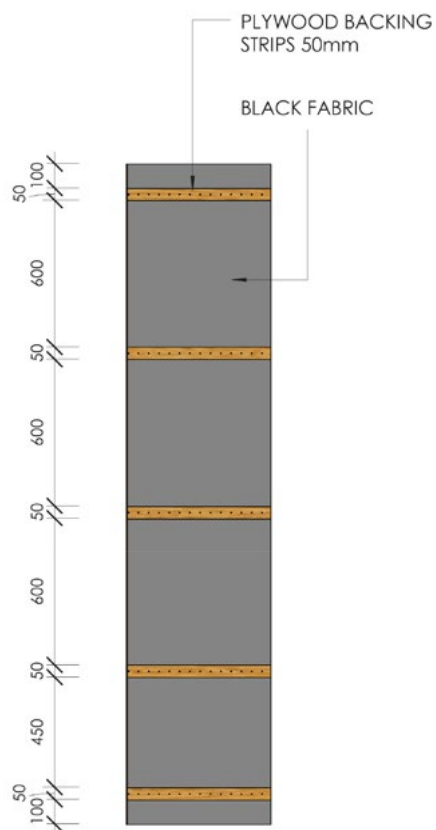
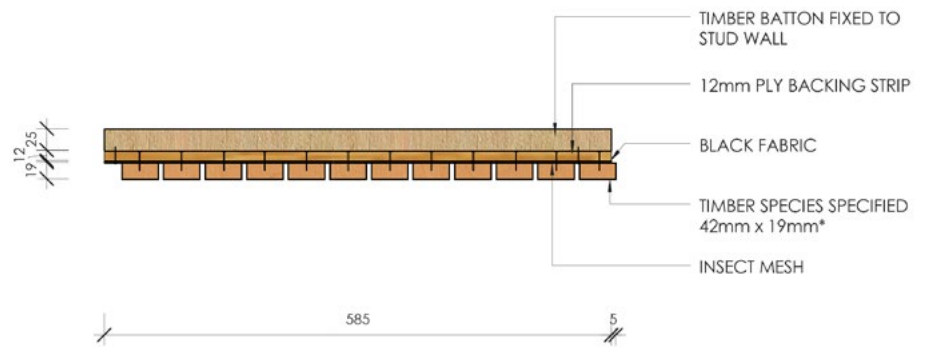
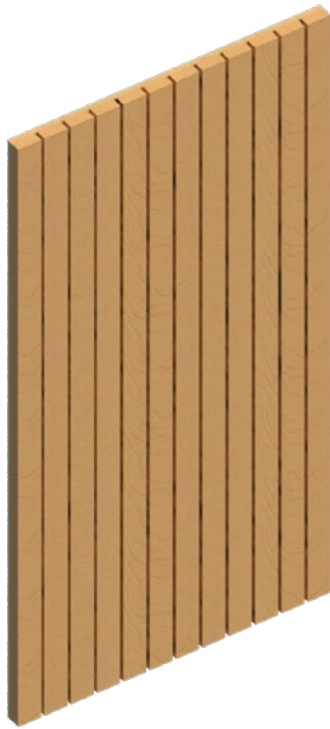


EPSILON PANEL



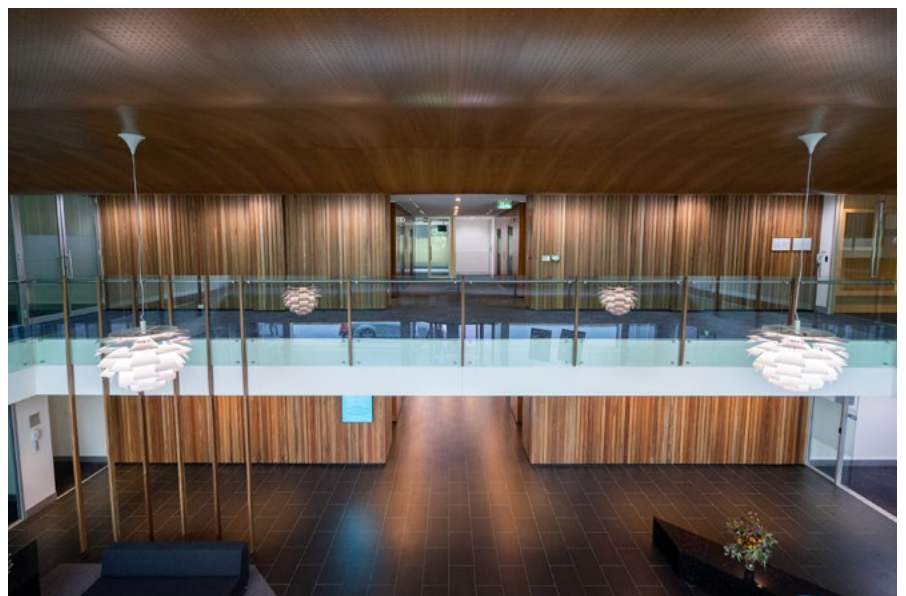
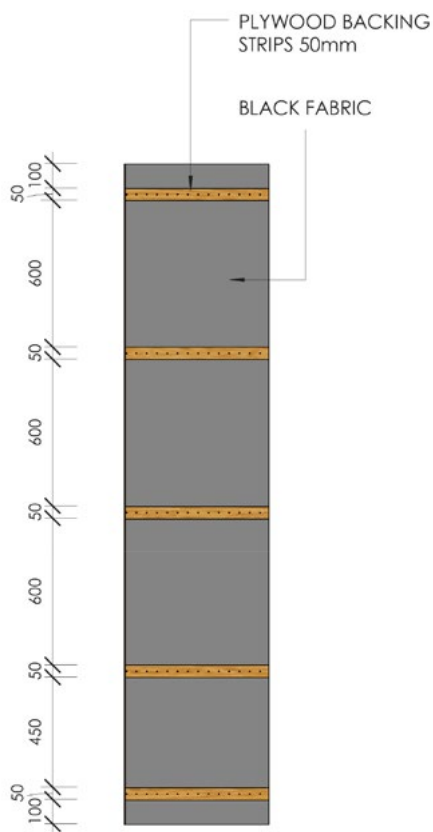
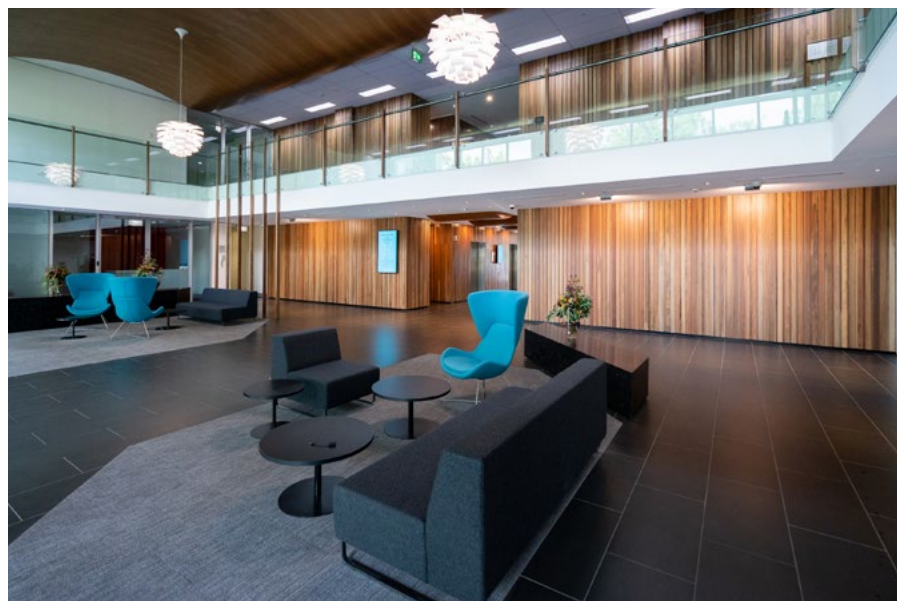
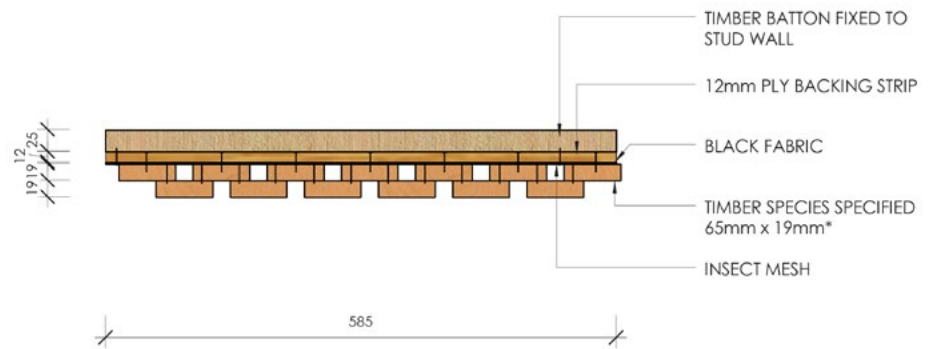
Phillip Office
Timber: Premium Pine
Finish: Cutek Oil in Smokey Grey

ALPHA PANEL



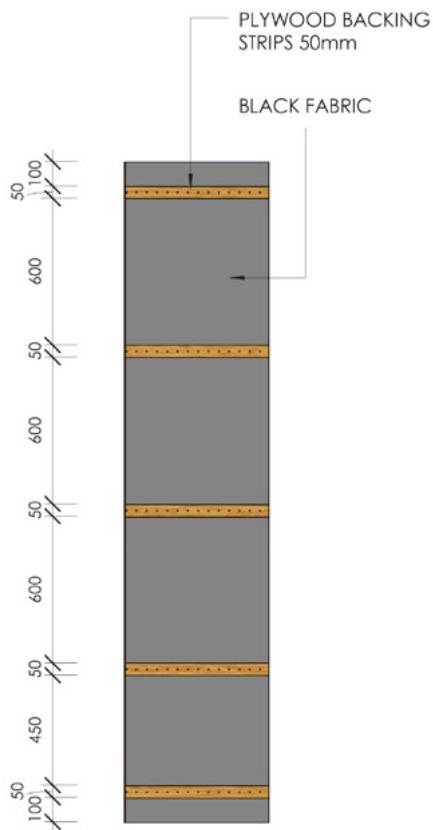
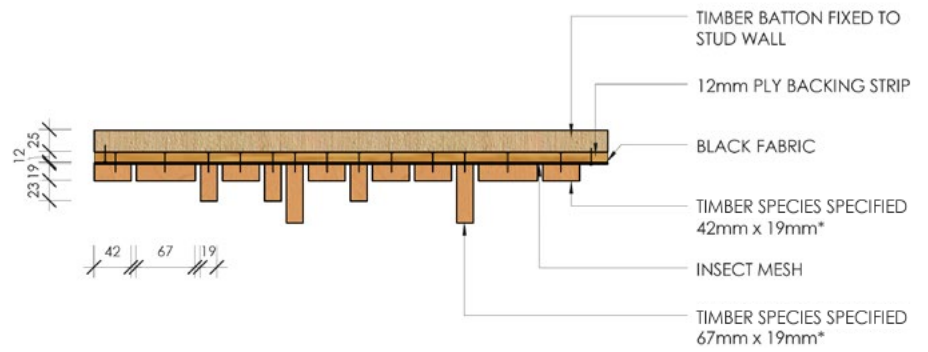
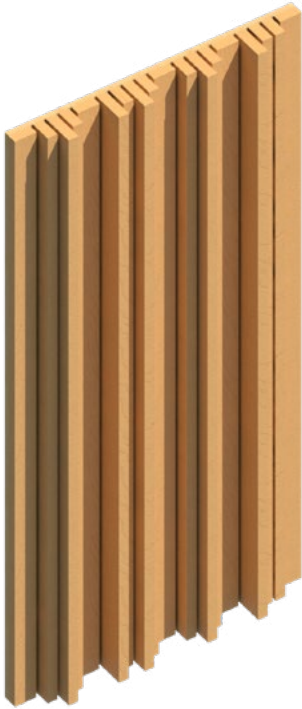
XO Restaurant
Timber: Victorian Ash
Finish: Clear Cutek Oil

OMEGA PANEL



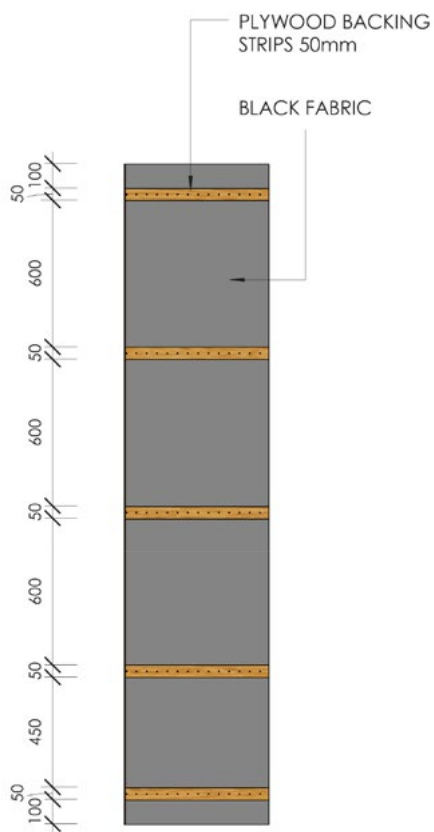
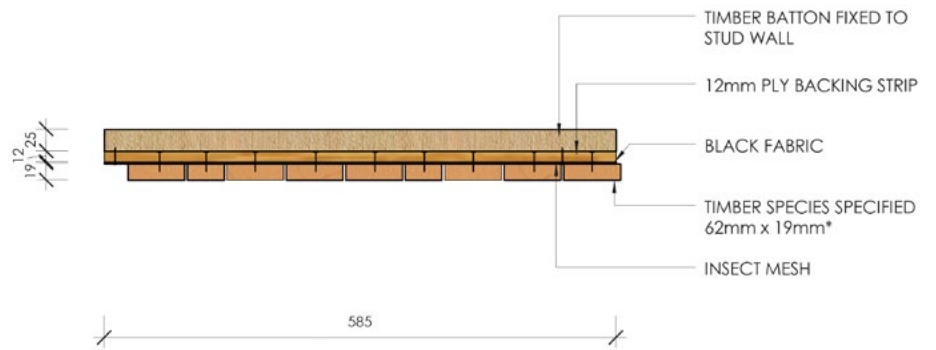
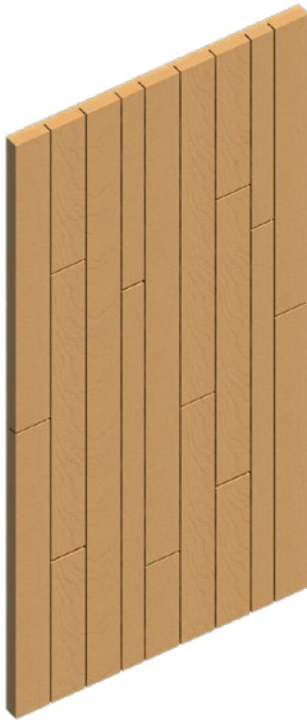
25 National Circuit
Timber: Spotted Gum
Finish: Clear Lacquer

GAMMA PANEL



Ora Hair Salon
Timber: Spotted Gum
Finish: Clear Cutek Oil

DELTA PANEL











Wright Residence
Timber: Spotted Gum
Finish: Clear Cutek Oil



TIMBER SPECIES GUIDE

Wellington Architectural timber species guide is aimed to assist architects, builders and contractors to determine the right timber to suit your project.

		Seasoned Density	Shrinkage	Strength Group	Durability Above Ground	Application	
\$ ↑		Radiata Pine White to Pale Yellow	550kg/m³	Medium	Reasonably Low	Low (0-7 years)	Interior Exterior (if treated)
		Western Red Cedar Pale Brown to Pink Brown Late wood darker	350kg/m³	Very Low	Very Low	Reasonably High (15-40 years)	Interior Exterior
		Hoop Pine Pale cream to light yellow	550kg/m³	Low	Medium	Low (0-7 years)	Interior Exterior (if treated)
		Hemlock Pale cream	500kg/m³	Medium	Reasonably Low	Low (0-7 years)	Interior
		Victorian Ash Pale pink to yellowish brown	660kg/m³	Very High	Medium High	Moderate (7-15 years)	Interior
		Spotted Gum Light brown to deep red-brown hues	1100kg/m³	Medium	High	High (+40 years)	Interior Exterior
		Blackbutt Golden yellow to pale brown occasional pink hues	900kg/m³	High	High	High (+40 years)	Interior Exterior
		American Oak Light to dark brown	750kg/m³	Very High	Reasonably Low	Moderate (7-15 years)	Interior
\$ \$ \$ ↓							

*All timber species above have a Fire Properties Group Number of 3 (slightly combustible)

Alternate timber species available include;

Jarrah, Merbau, European Oak, Tasmanian Oak, Blue Gum, Rock Maple, Douglas Fir, Iron Bark, New Guinea Rosewood, Walnut

PANEL MAINTENANCE

Maintenance of Wellington Architectural Panels varies according to the timber, coating and application.

Should internal panels require cleaning, we recommend dusting or wiping the panels down with a clean damp cloth. If the panels are subject to any moisture, please wipe them down immediately. Excess moisture can negatively impact the timber and the coating.

External maintenance will depend on the finish, location of the panel and installation. The finish may need to be reapplied. Typically, oil finishes will need to be reapplied every 12-24 months. Timing will vary depending on site conditions, aspect and client expectation.



PERFORATED PANEL RANGE

Wellington Architectural specialises in the manufacture of 'design-flexible' pre-fabricated perforated cladding panels. Our panels feature concealed fixings which provide a seamless finish with fast installation and reduced waste.

We have a range of designs to choose from in our design library, or you can design your own panels to suit your project.

The perforated panel range is designed to be flexible to suit any application. Panels can be used on vertical and horizontal surfaces, and all panels and designs can be rotated or customised to suit the project.

The pricing for our perforated panel range varies based on the material selection and complexity of the design.

The benefits of using our perforated panel range include:



Design Flexible
customisable panel designs



Colour Selection
wide range of veneer finishes



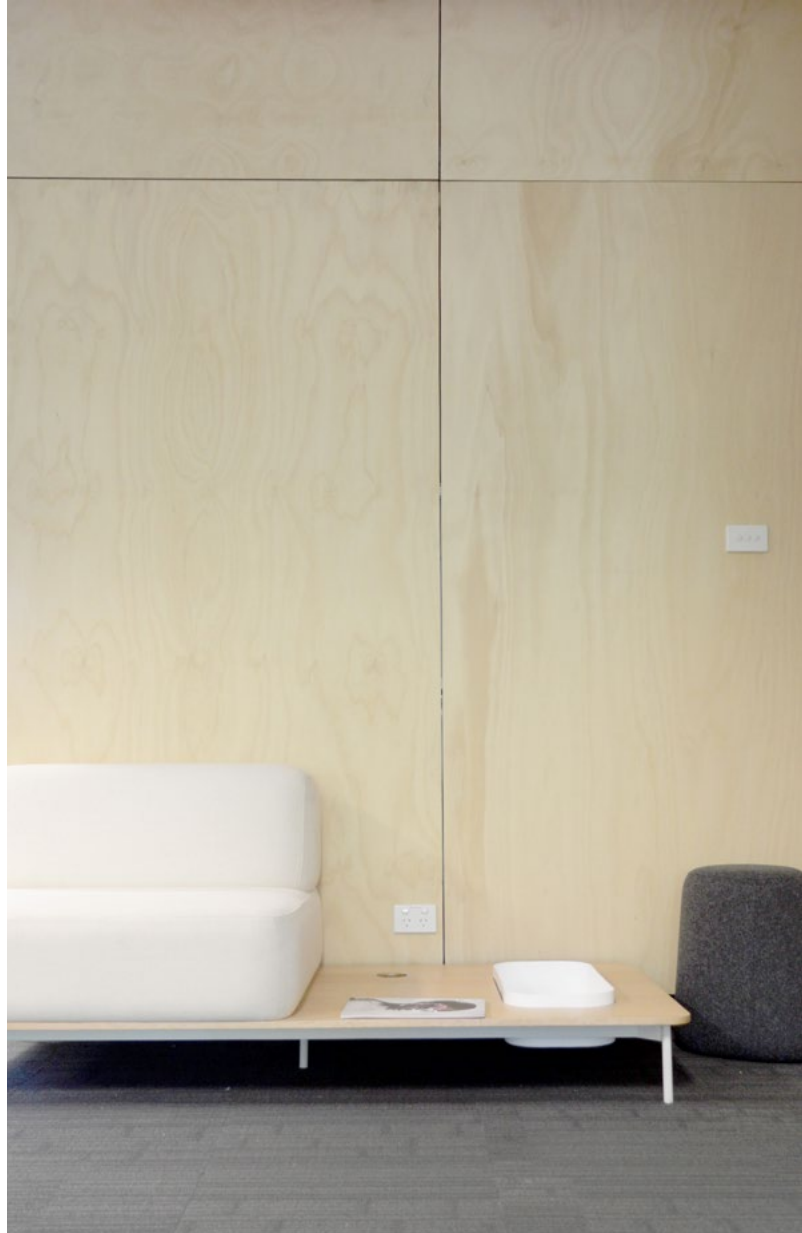
Easy Installation
with concealed fixing system



Access Panel
and service panel options

See below our design guide with our range of panel designs and information about material and colour selection.

Please contact us if you have any questions about our perforated panel range.





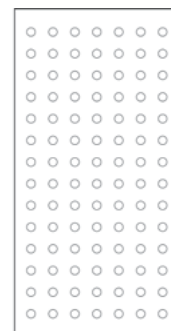
PERFORATED PANEL DESIGN GUIDE

Wellington Architectural design guide is aimed to assist architects, builders and contractors to easily and cost-effectively tailor our perforated panel range to suit your project.

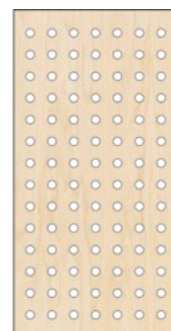
STEP 1 DETERMINE PANEL SIZE



STEP 2 DESIGN YOUR PERFORATION



STEP 3 MATERIAL SELECTION

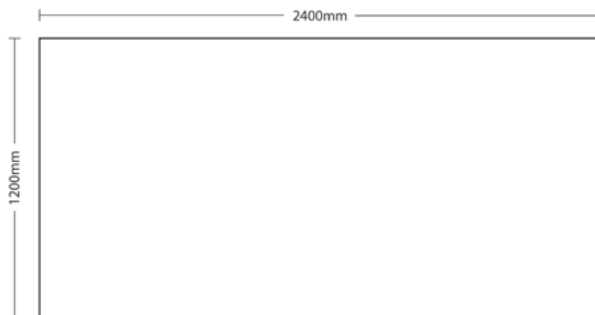




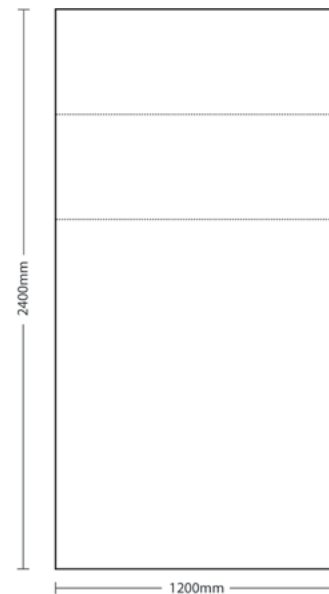
STEP 1 DETERMINE PANEL SIZE

Determine the size of the panels required to suit your space. You may need a few different panel sizes depending on the panel layout and shape.

Tip: A standard panel size is 1200mm x 2400mm. To reduce wastage and keep costs down it is best to design the panels for your project based on a standard panel sizes with minimal offcuts.



For example: A floor to ceiling panel with 2400mm ceiling height can utilise the full panel height. However above a storage unit the required height would be less, and the off-cut could be used above a door opening.





STEP 2 DESIGN YOUR PERFORATION

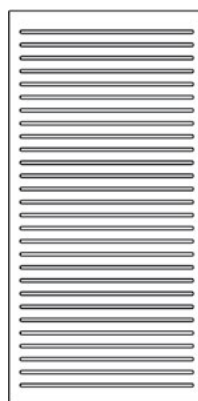
Select a perforation from our design library or design your own. You can either cut out full shapes, etch shapes or a combination of perforations and etching.

Tip: Larger designs with curved lines (eg. no sharp edges or small details) will be more cost effective and have a shorter lead time.

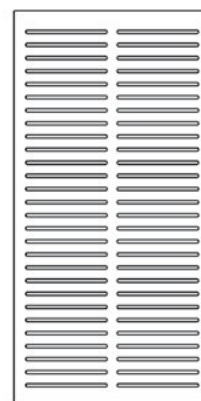
Depending on your design you may also want to consider leaving a solid border around your design. Also consider how panels will look when placed next to each other and if your design repeats well.

Export your design as a .DXF file. This will ensure accuracy when we transfer your design to the machine.

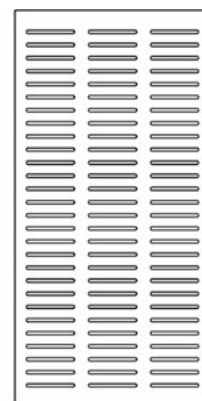
Find more designs in our Perforated Panel Range library below.



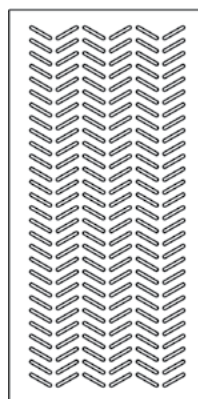
Slotted (One Column)



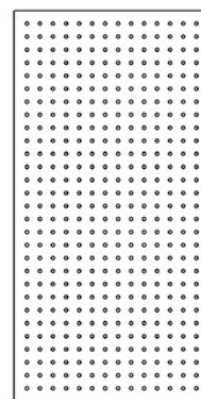
Slotted (Two Column)



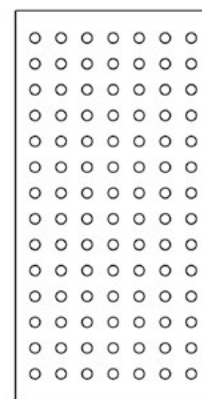
Slotted (Three Column)



Herringbone

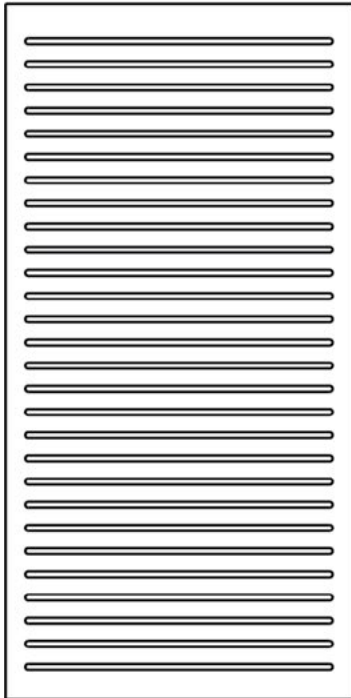


Circles (Small)

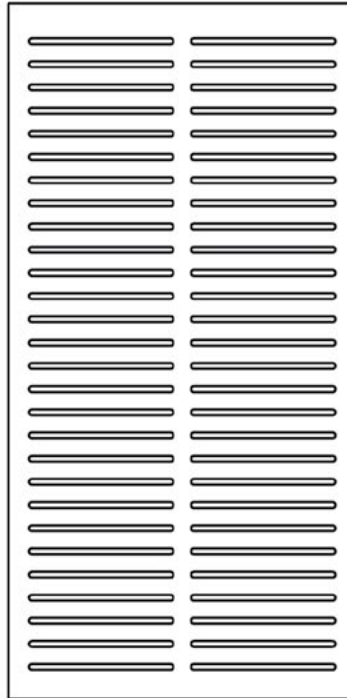


Circles (Large)

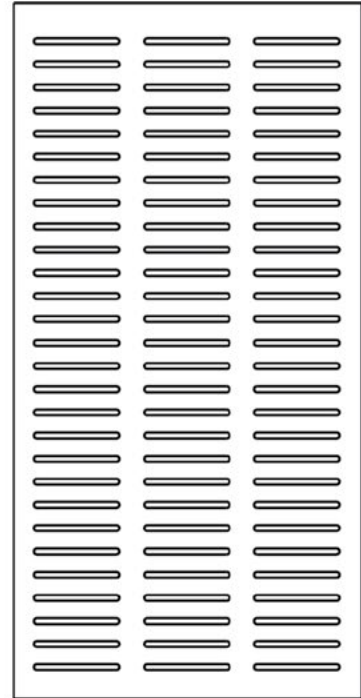
PERFORATED PANEL DESIGN LIBRARY



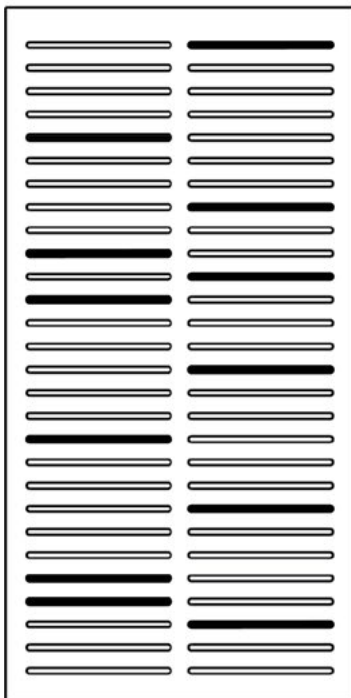
Slotted (One Column)



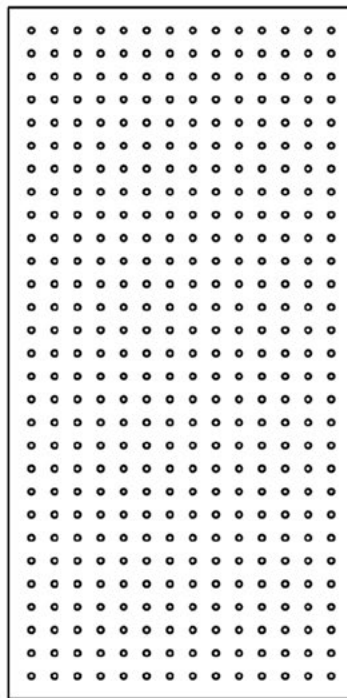
Slotted (Two Column)



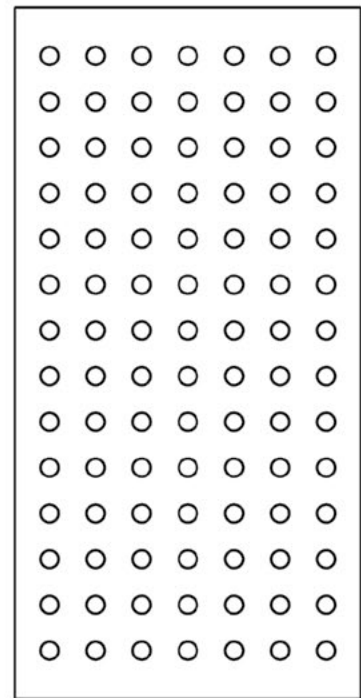
Slotted (Three Column)



Slotted (Cut & Etched)

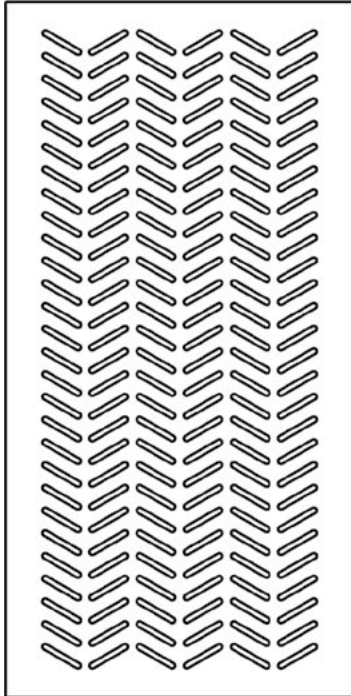


Circles (Small)

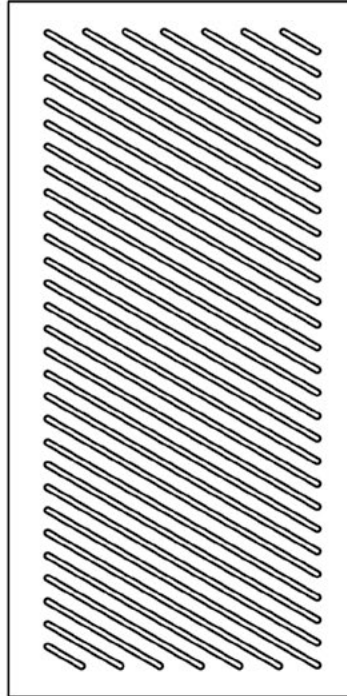


Circles (Large)

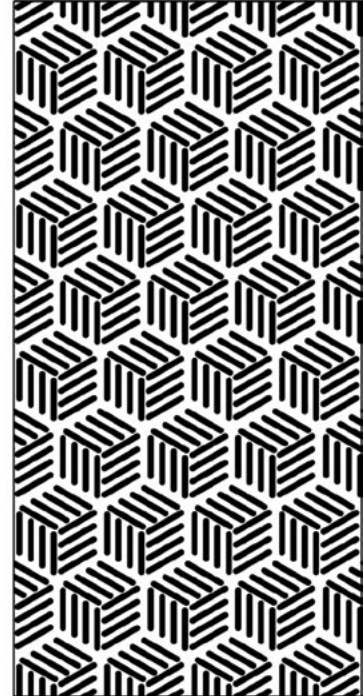
— Cut Lines
— Etched



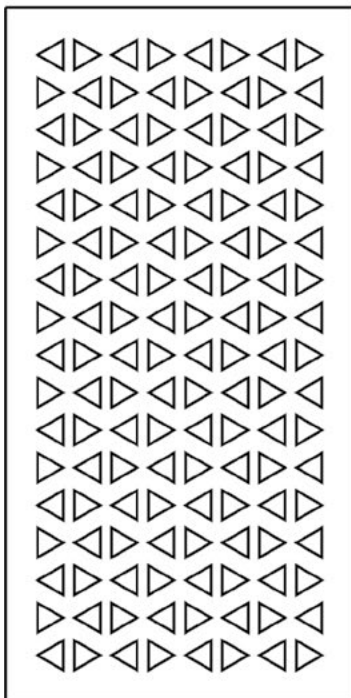
Herringbone



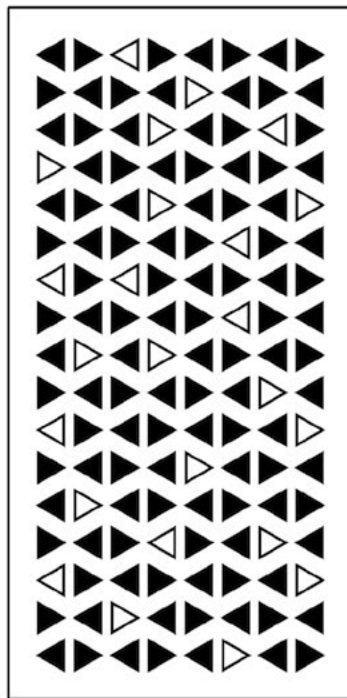
Slotted (Diagonal)



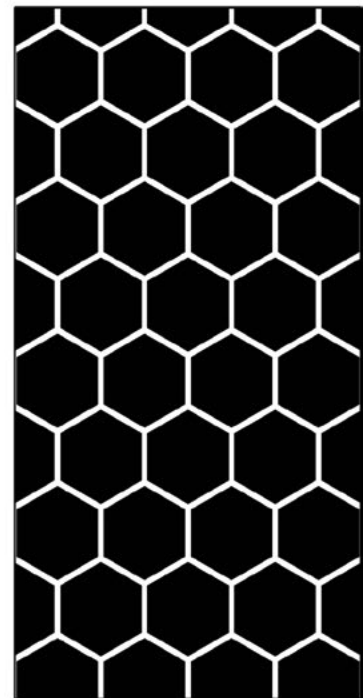
Cubes (Etched)



Triangles



Triangles (Cut & Etched)



Hexagonal (Etched)

STEP 3

MATERIAL AND COLOUR SELECTION

Select your material and colour from the range below.

Available materials include:

- Medium Density Fibreboard (MDF)
- Plywood
- Timber Veneer

You can also select a backing colour. As standard we use black fabric for all of our perforated panels however we can customise this to suit your project.

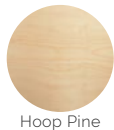
Colour swatches shown below are a guide only. Actual colours may vary from panel to panel.

MDF

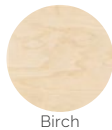


MDF

PLYWOOD



Hoop Pine



Birch

TIMBER VENEER



American Cherry



American Oak



American Walnut



Beech



Blackbutt



Blackhole Blackbutt



Blackwood



Brushbox



Clear Radiata Pine



Hoop Pine



Ironbark Grey



Ironbark Red



Jarrah



Knotty Pine



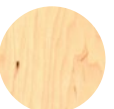
New Guinea Rosewood



Plantation Oak



Red Gum



Rock Maple



Sapele



Sliced Pacific Maple



Spotted Gum



Sydney Blue Gum



Tasmanian Ash



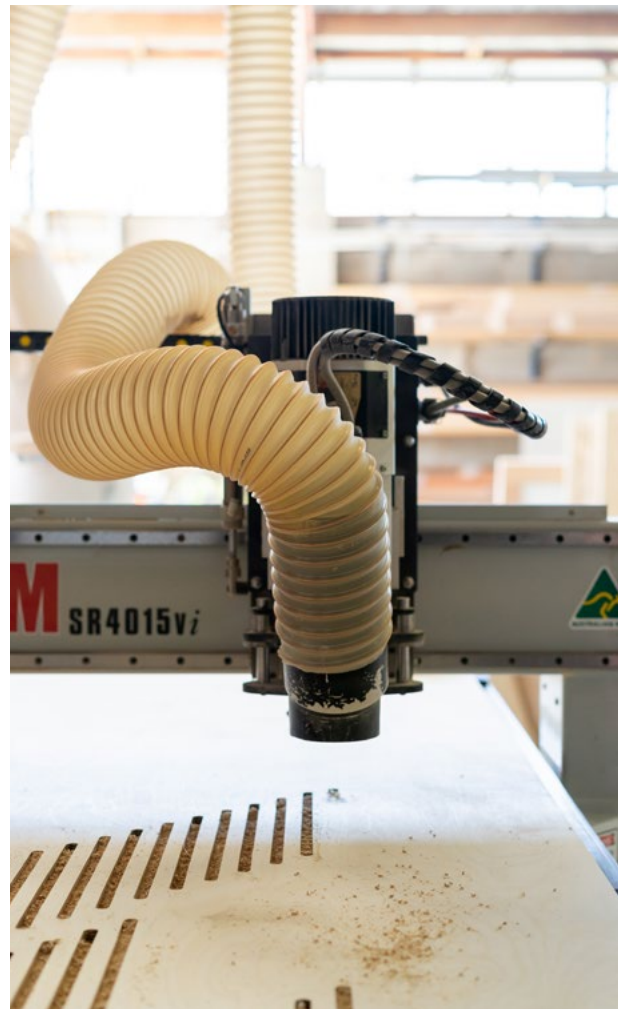
Tasmanian Myrtle



Tasmanian Oak



Teak



PANEL MAINTENANCE

Maintenance of Wellington Architectural Panels varies according to the material selection and application.

Should internal panels require cleaning, we recommend dusting or wiping the panels down with a clean damp cloth.

If the panels are subject to any moisture, please wipe them down immediately. Excess moisture can negatively impact the timber and the coating.



TIMBER FRAMED GLASS PARTITIONING

TIMBER FRAMED GLASS PARTITIONING

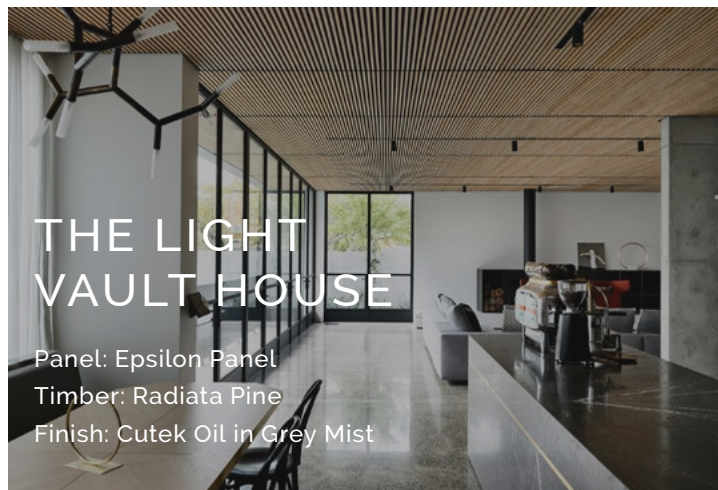
Wellington Architectural timber framed glass partitioning system is manufactured from solid hardwood timbers which give an elegant warm feel to the office environment.

Our method for building timber partitions ensures complete flexibility to meet the challenges of your project needs. Using all timber components for door and glazing frames, a high quality effect is created.

Our most recently completed project is the innovative 5 storey building at MLC Senior Campus. This project features 700m² of glass partitioning with a solid victorian ash framing finished with a clear Osmo oil and 3m high glazed victorian ash doors completed over 4 levels.

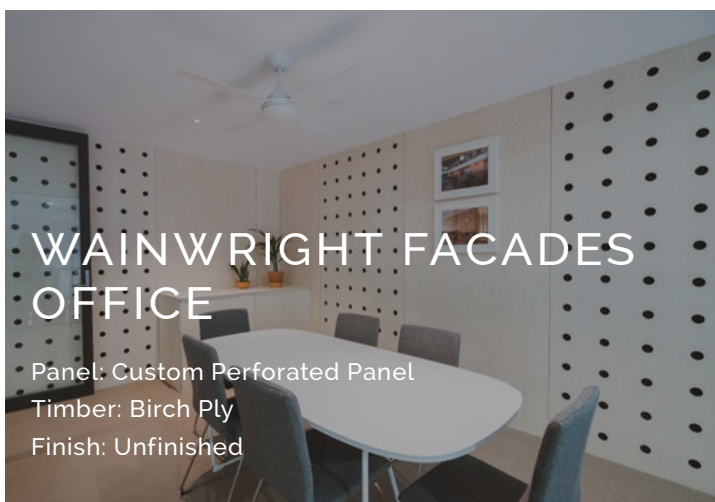
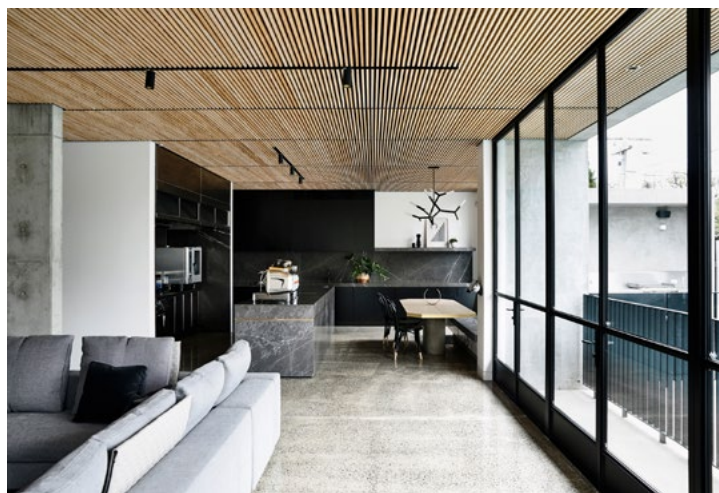
Installing the partitioning system using our preferred installer, Wainwright Facades, ensures the highest quality finish on your project.





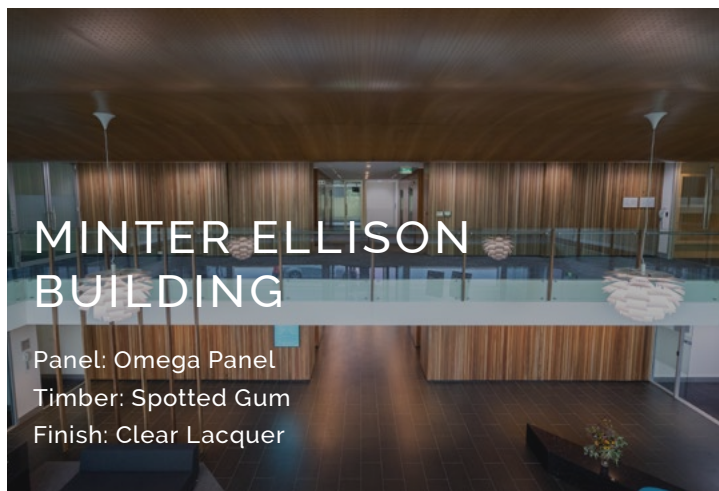
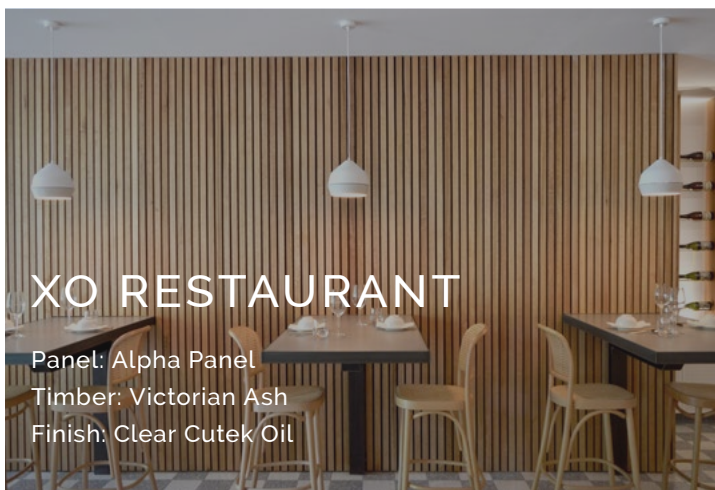
THE LIGHT VAULT HOUSE

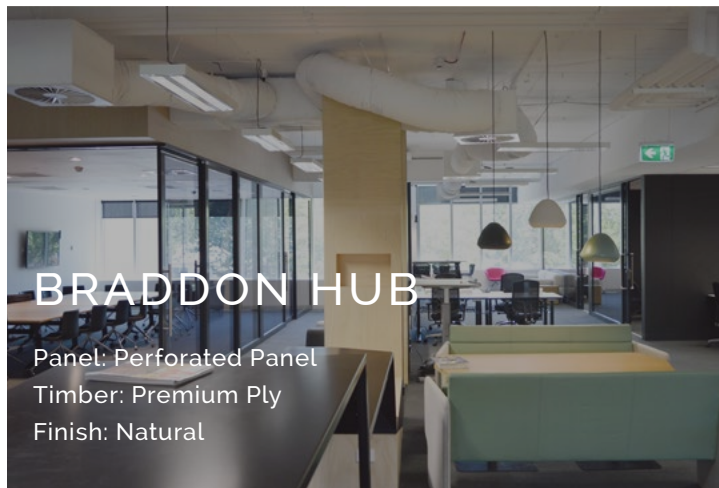
Panel: Epsilon Panel
Timber: Radiata Pine
Finish: Cutek Oil in Grey Mist



WAINWRIGHT FACADES OFFICE

Panel: Custom Perforated Panel
Timber: Birch Ply
Finish: Unfinished

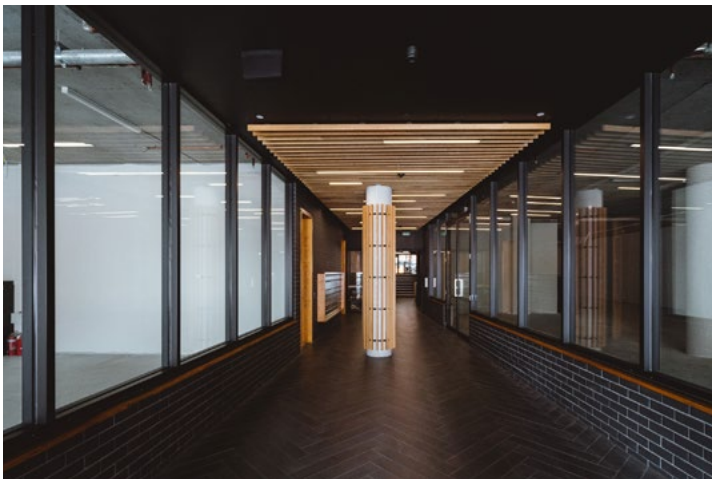
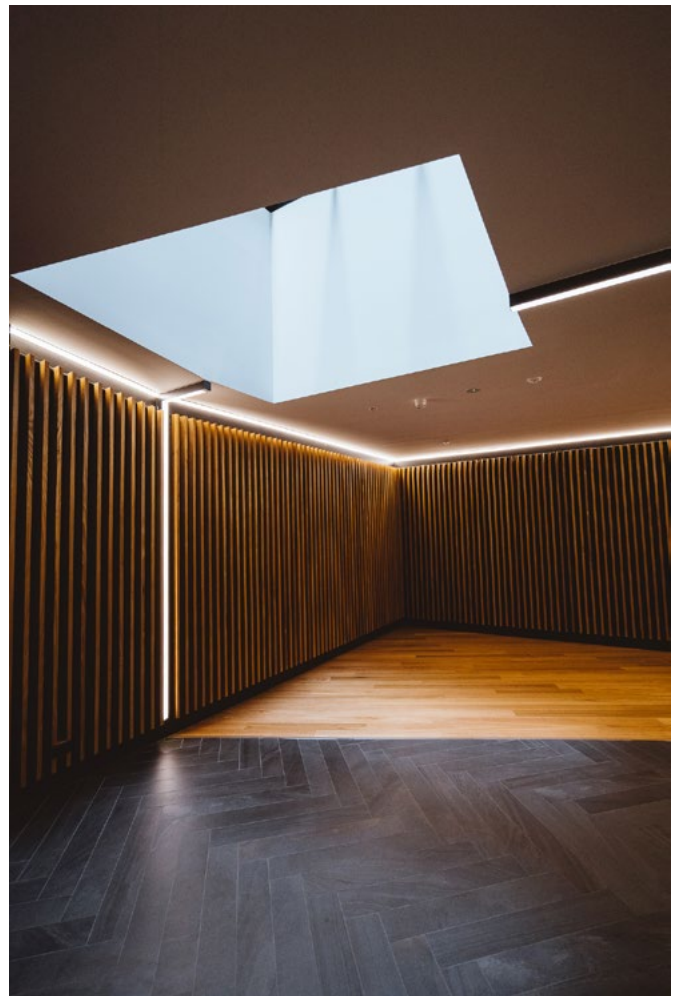






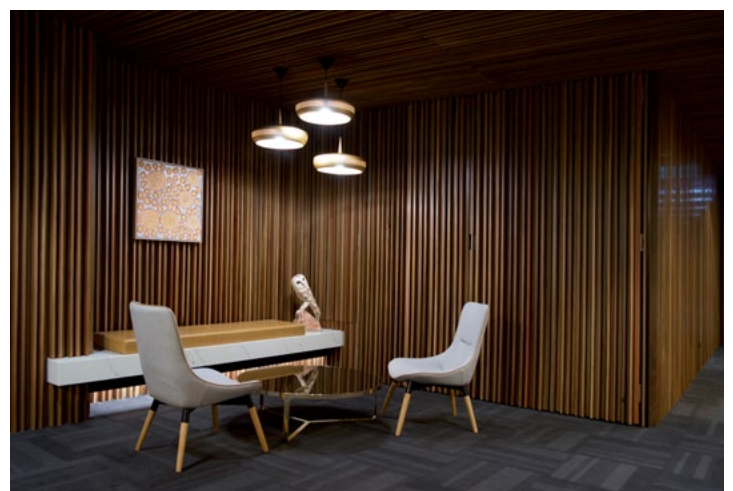
GALLERY APARTMENTS

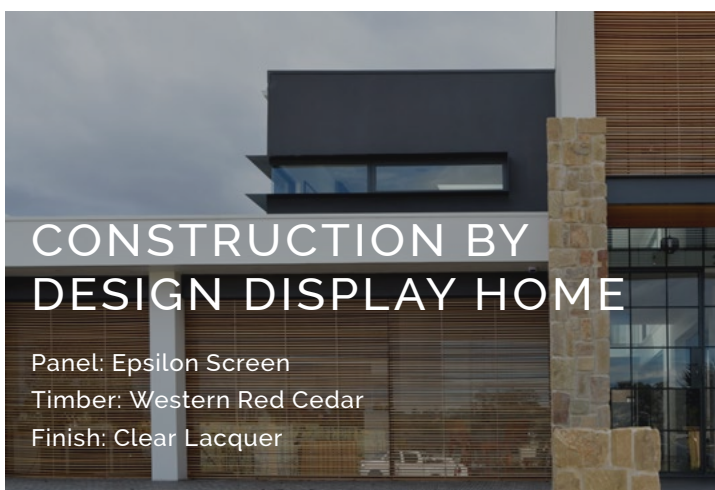
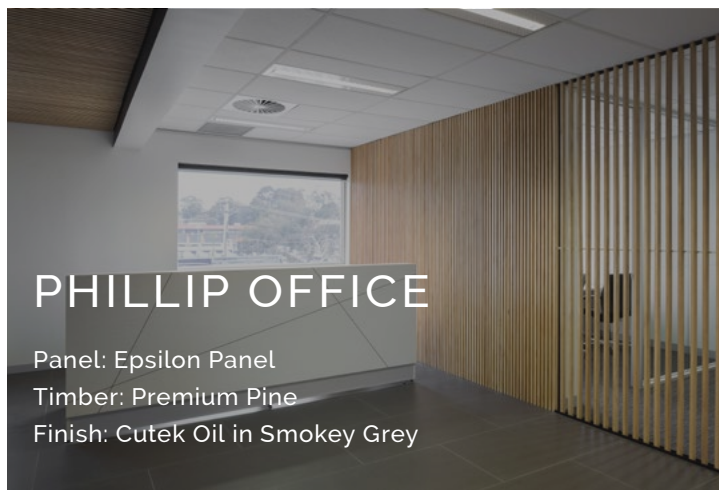
Panel: Custom Epsilon Panel
Timber: Victorian Ash
Finish: Clear Cutek Oil



BRADDON OFFICE

Panel: Custom Panel
Timber: Spotted Gum
Finish: Clear Lacquer











Wellington Architectural

www.wellingtonarchitectural.com

P 02 6280 8496 | E info@wellingtonarchitectural.com

ABN: 70 630 528 380